

history

museum for arab art, cordoba (spain)



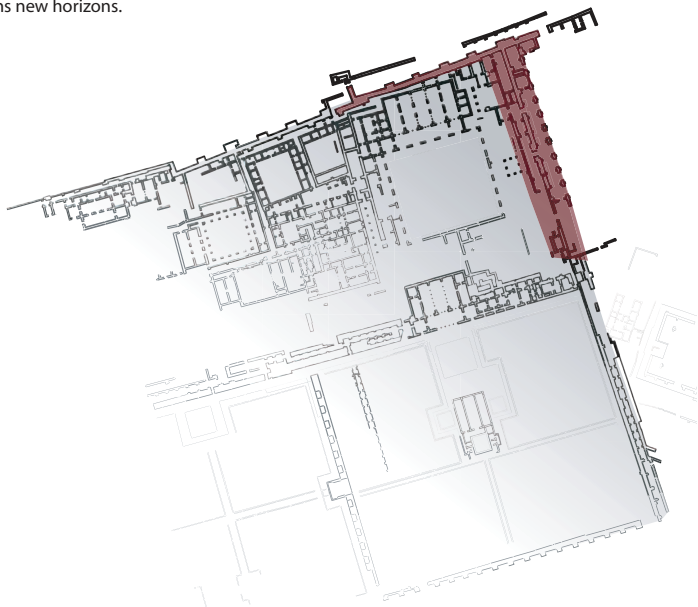
the context

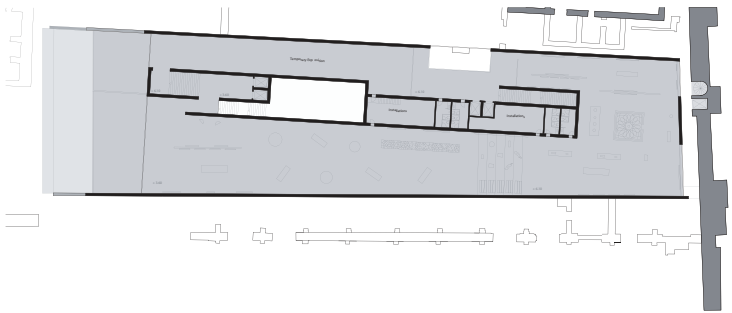
the museum is the key to understanding history and culture. at the same time the building acts as a gate from present to past.

placed at the limit of califf city the building, with the help of the strong wall, gives a strong border to the city. it clearly defines the archeological site.

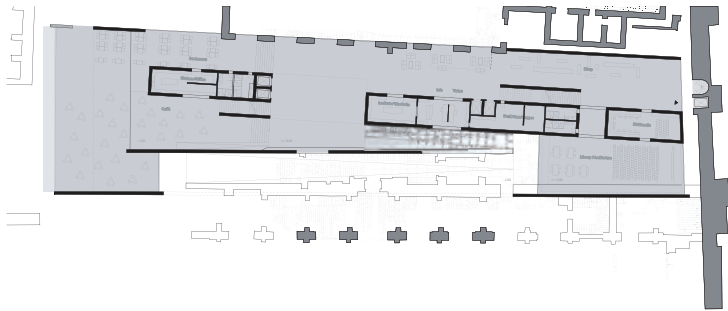
reaching the museum; the arches and the ramps are the only sign that show the presence of the ancient city.

the museum is a filter visitors have to pass through to reach the ruins. it becomes a gate to the past, an experience that changes your mind and opens new horizons.



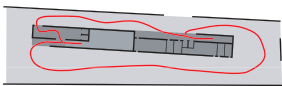


first floor - expositions floor

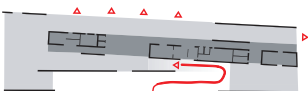


g round floor - services floor

circulation



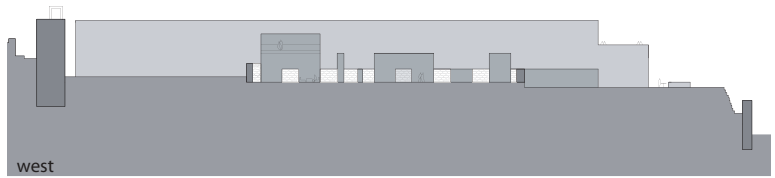
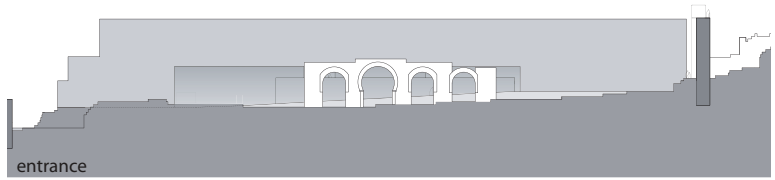
first floor



ground floor



elevations



sections

